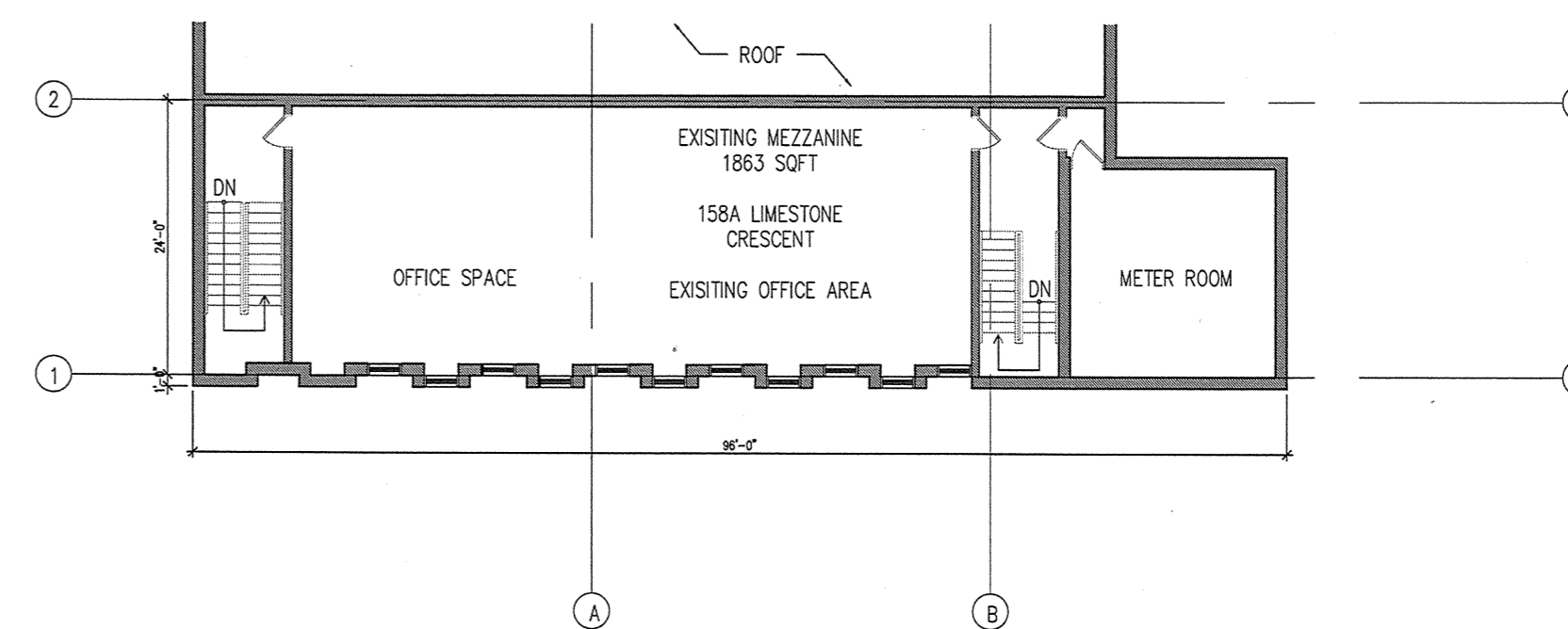


1 OVERALL EXISTING GROUND FLOOR PLAN  
A2-1 SCALE 1/16" = 1'-0"

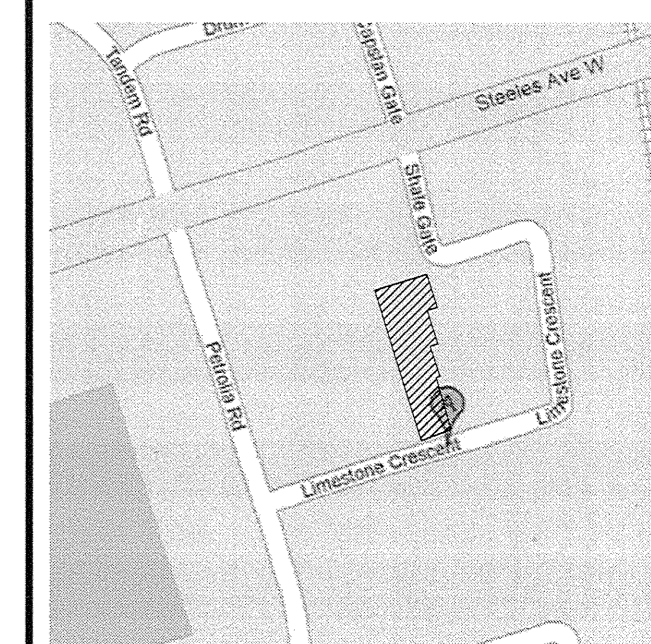
LEGEND	
---	FUTURE CONSTRUCTION
---	EXIST. CONSTRUCTION TO REMAIN
□ F.D.	FLOOR DRAIN
↗	EXIST. DOOR TO REMAIN/RELOCATED

ABBREVIATIONS	
W.R.	WASHROOM
TYP. NO.	TYPICAL NUMBER
SIB.	STANDARD IRON BAR
IB.	IRON BAR
BA.	BROAD ARROW
CP.	CONCRETE PIN



2 OVERALL EXISTING SECOND FLOOR PLAN  
A2-1 SCALE 1/16" = 1'-0"



KEY PLAN (N.T.S.)

ANY UNAUTHORIZED ALTERATION, PUBLICATION, COPYING OR USE OF THE DRAWING WITH THE WRITTEN CONSENT FROM SIRLIN GILLER AND MALEK ARCHITECTS IS STRICTLY PROHIBITED AND SHALL BE DEEMED AN INFRINGEMENT UNDER THE COPYRIGHT ACT.

SIRLIN GILLER AND MALEK ARCHITECTS RESERVES ALL PROPERTY RIGHTS IN AND TO THE DIGITAL DATA INCLUDING COPYRIGHT.

DATE	NO.	DESCRIPTION	BY
MAR.16,2009	1	ISSUED FOR CLIENT REVIEW	SNHN

FINAL DATE ABOVE SUPERSEDES ALL PREVIOUS ISSUES

REVISIONS

KEY TO DETAIL LOCATION  
○ DETAIL NOTATION  
○ DRAWING NUMBER

CONTRACTOR MUST CHECK AND VERIFY ALL DIMENSIONS AND CONDITIONS ON THE JOB AND REPORT ANY DISCREPANCIES TO THE ARCHITECT BEFORE PROCEEDING WITH THE WORK  
DRAWINGS ARE NOT TO BE SCALED.

**SG & M**  
Sirlin Giller & Malek Architects

272 Lawrence Ave. W.  
Suite 200, Toronto  
Ontario M5M 4M1  
Tel: (416) 781-6125  
Fax: (416) 781-2874  
sgmarch@sgm-arch.com



INDUSTRIAL DEVELOPMENT FOR LIMESTONE INVESTMENT LTD.

158 - 182 LIMESTONE CRESCENT  
TORONTO, ONTARIO

EXISTING FLOOR PLANS

SCALE	AS SHOWN
DRAWN	SN
CHECKED	L.M.
DATE	02 MAR. 2009
PROJ. NO.	2009-08
DRAWING NO.	A2-1