

SURVEYOR'S REAL PROPERTY REPORT
 PLAN OF
LOTS 350, 351 AND 352
REGISTERED PLAN 1626
 CITY OF TORONTO

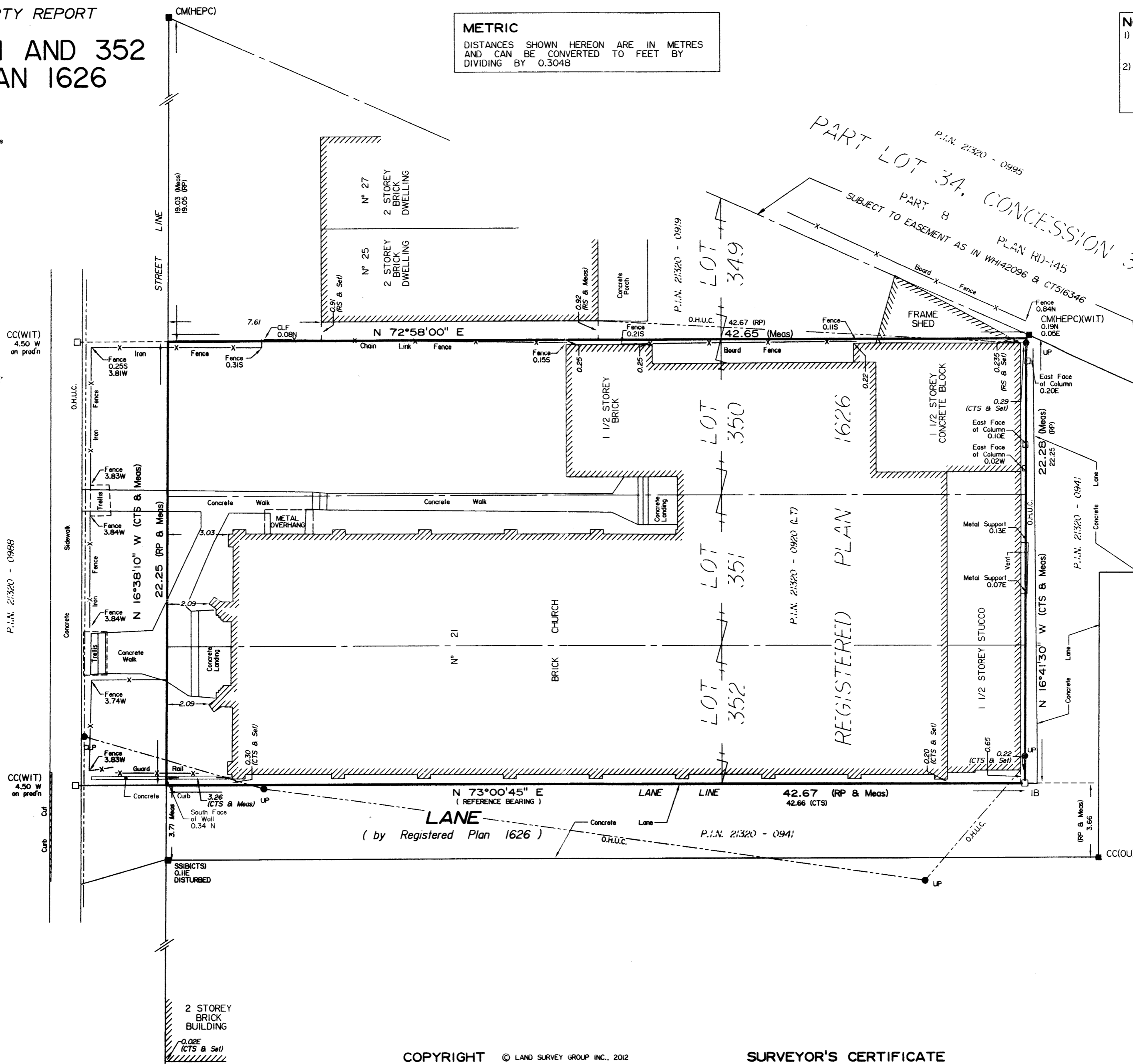
SCALE = 1 : 150



BLACKTHORN AVENUE
 (Formerly HALLAWELL AVENUE, by Registered Plan 1626)

METRIC
 DISTANCES SHOWN HEREON ARE IN METRES
 AND CAN BE CONVERTED TO FEET BY
 DIVIDING BY 0.3048

NOTE
 1) THIS PLAN MUST BE READ IN CONJUNCTION WITH SURVEY REPORT DATED FEBRUARY 28TH, 2012
 2) THIS PLAN AND REPORT WERE PREPARED FOR ANGLICAN DIOCESE OF TORONTO AND THE UNDERSIGNED ACCEPTS NO RESPONSIBILITY FOR USE BY OTHER PARTIES.



LEGEND

□	DENOTES	MONUMENT PLANTED
■	— —	MONUMENT FOUND
WIT	— —	WITNESS
CM	— —	CONCRETE MONUMENT
CC	— —	CUT CROSS
SSIB	— —	SHORT STANDARD IRON BAR
RP	— —	REGISTERED PLAN 1626
CTS	— —	CITY OF TORONTO SURVEYS (1626Y-99)
HEPC	— —	HYDRO ELECTRIC POWER COMMISSION
RS	— —	ROGER SILVERA, O.L.S. (JULY 31, 1969)
P.I.N.	— —	PROPERTY IDENTIFIER
UP	— —	UTILITY POLE
O.H.U.C.	— —	OVERHEAD UTILITY CABLE

ST. CLAIR AVE. WEST

COPYRIGHT © LAND SURVEY GROUP INC., 2012
 NO PERSON MAY COPY, REPRODUCE, DISTRIBUTE OR ALTER THIS PLAN IN WHOLE OR IN PART WITHOUT WRITTEN PERMISSION FROM LAND SURVEY GROUP INC., ONTARIO LAND SURVEYORS.

BEARING NOTE
 BEARINGS ARE ASTRONOMIC AND ARE REFERRED TO THE SOUTHERLY LIMIT OF LOT 352 HAVING A BEARING OF N 73° 00' 45" W AS SHOWN ON CITY OF TORONTO SURVEYS FIELD NOTES (1626Y-99).

SURVEYOR'S CERTIFICATE

I CERTIFY THAT :
 1. THIS SURVEY AND PLAN ARE CORRECT AND IN ACCORDANCE WITH THE SURVEYS ACT, THE SURVEYORS ACT AND THE REGULATIONS MADE UNDER THEM.
 2. THE SURVEY WAS COMPLETED ON FEBRUARY 1, 2012

DATE **B. K. WARREN**
 Ontario Land Surveyor

ASSOCIATION OF ONTARIO LAND SURVEYORS
 PLAN SUBMISSION FORM
1830767

 THIS PLAN IS NOT VALID UNLESS IT IS AN EMBOSSED ORIGINAL COPY ISSUED BY THE SURVEYOR in accordance with Regulation 1026, Section 29(3).

LSG | **LAND SURVEY GROUP**
 ONTARIO LAND SURVEYORS
 777 THE QUEENSWAY, UNIT 1, TORONTO, ONTARIO, M8Z 1N4
 Tel: 416-252-2511 416-467-8023 Fax: 416-252-1501 www.landsurveygroup.com
 DRAWN : J. TEIXEIRA CHECKED BY : BKW PLAN N° : LSG-1643