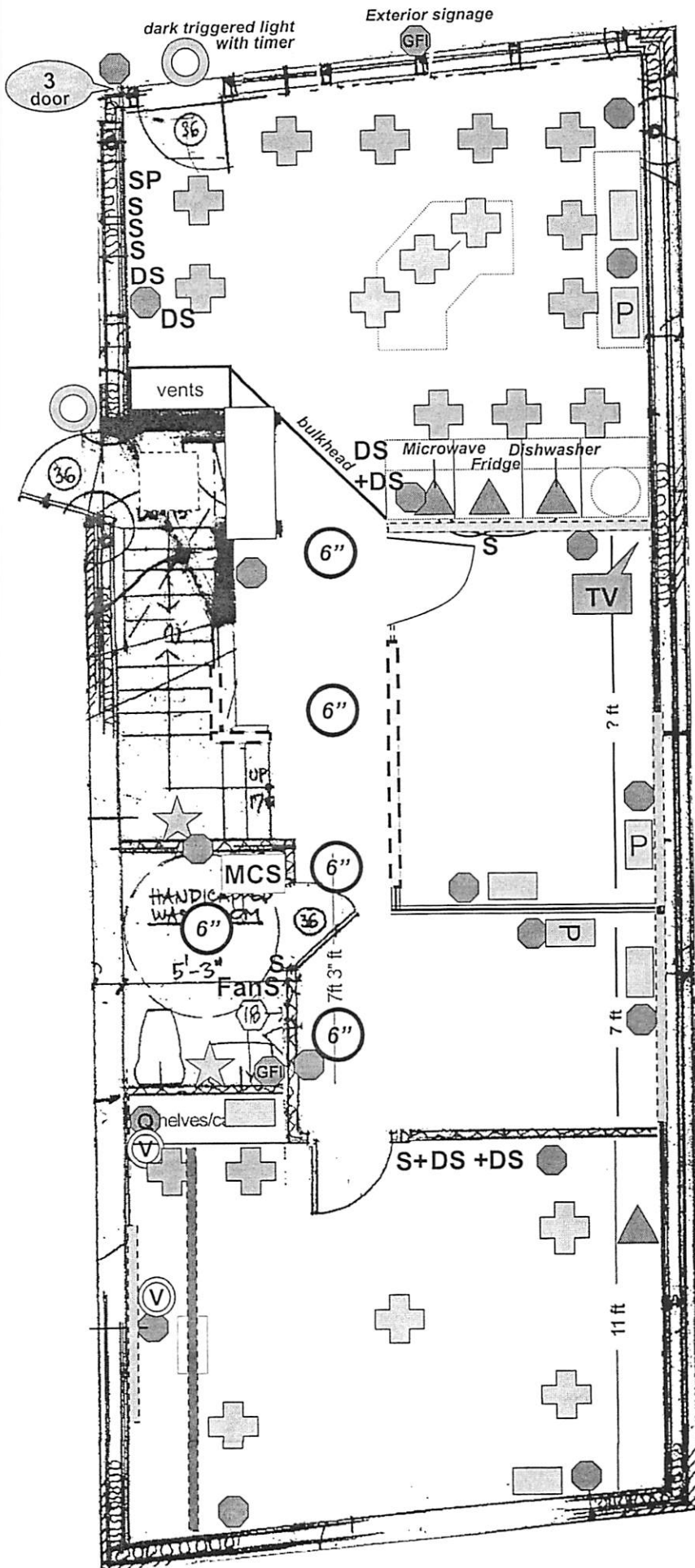


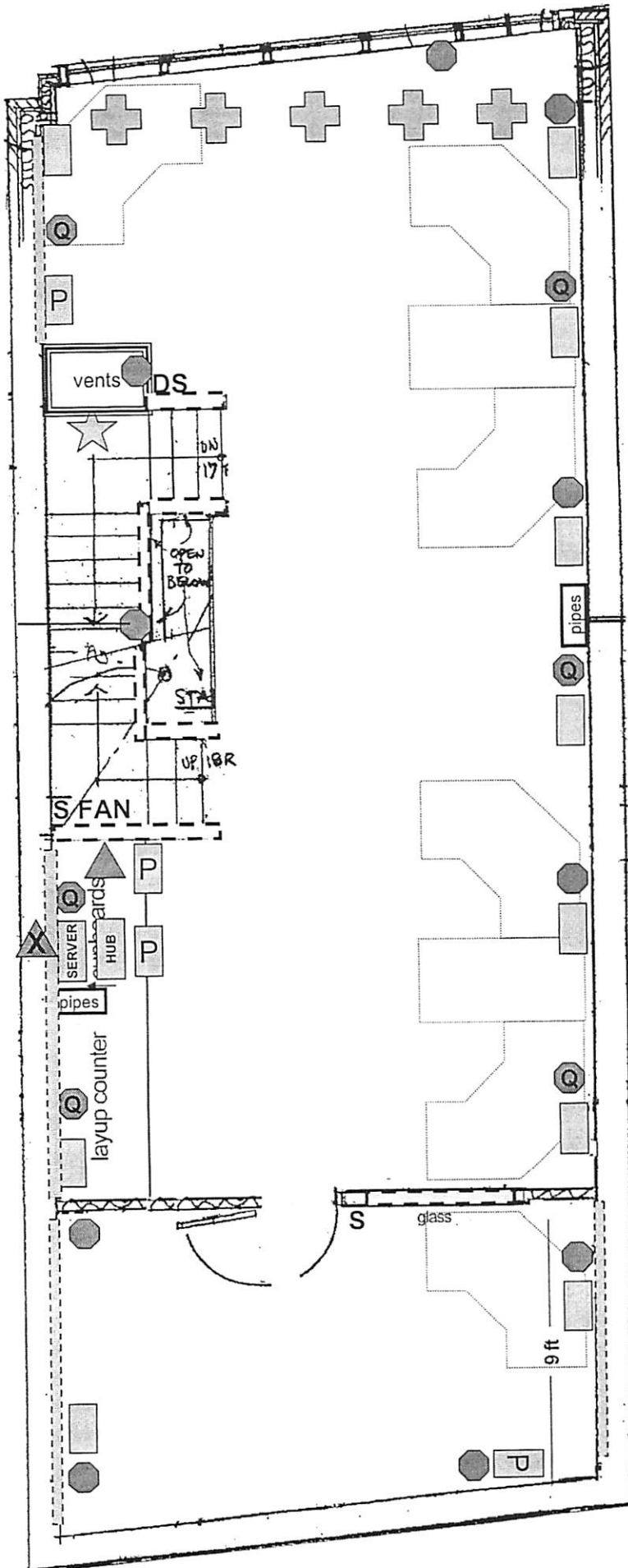
15 Glenforest Rd.
Main floor
Jan 25/05



SYMBOL KEY:

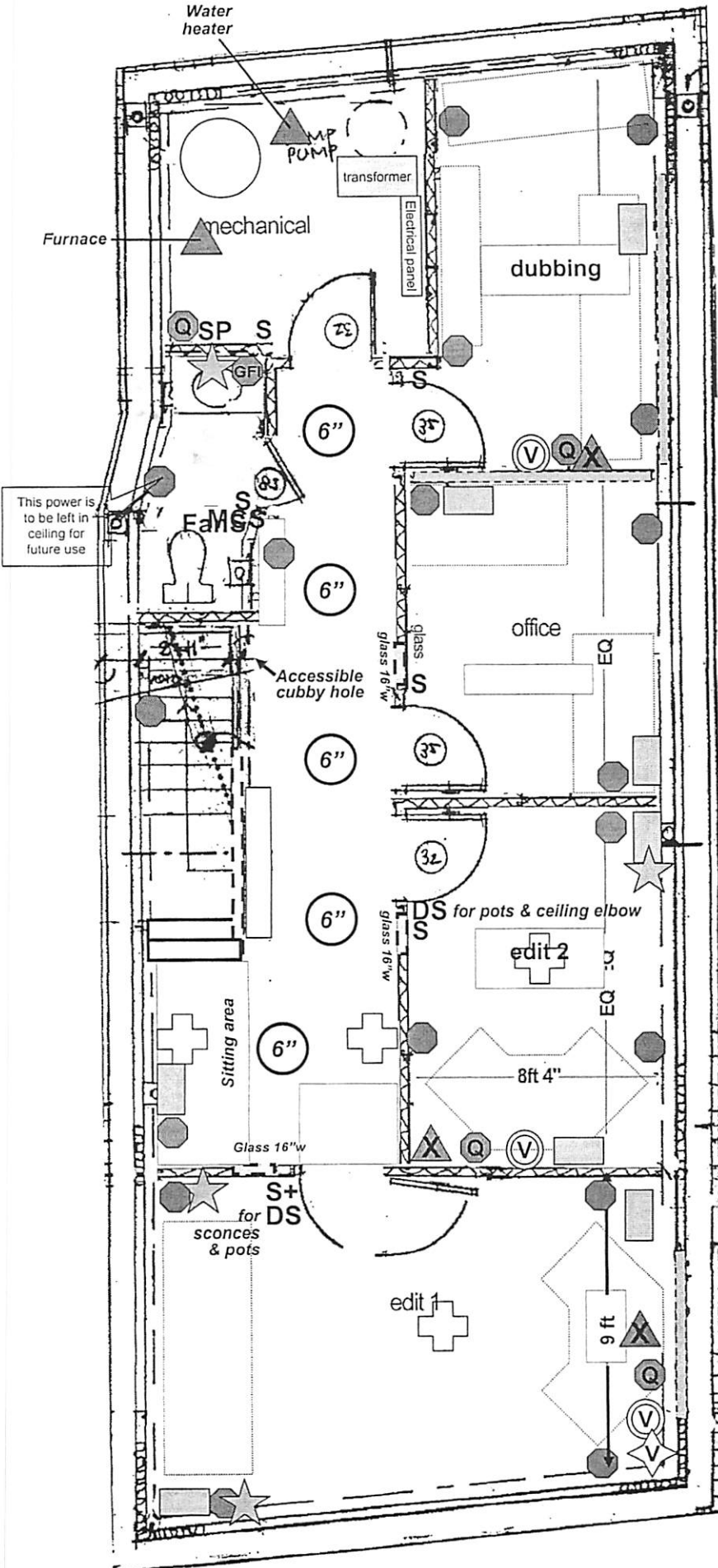
- Regular outlet
- Quad outlet (2 circuits)
- GFI outlet
- Separate circuit outlet
- ISO ground
- Ethernet RY45 (P is printer port)
- Fluorescent switch
- Dimmer Pot light switch
- Motion control switch
- 4" halogen (for art)
- Ceiling drop fixture
- Wall sconce
- Recessed Pot with Fluorescent and lens
- Exterior light
- Fluorescent 2x2ft
- Security Camera or sensor
- Security Panel
- Phone jack
- Cable jack
- Video/audio cables conduit to/from dubbing
- Railing
- Wood blocking
- Valance

15 Glenforest Rd.
2nd floor
Jan 25/05



- SYMBOL KEY:**
- Regular outlet
 - Quad outlet (2 circuits)
 - GFI outlet
 - Separate circuit outlet
 - ISO ground
 - Ethernet RY45 (P is printer port)
 - Fluorescent switch
 - Dimmer Pot light switch
 - Motion control switch
 - 4" halogen (for art)
 - Ceiling drop fixture
 - Wall sconce
 - 6" Recessed Pot with Fluorescent and lens
 - Exterior light
 - Fluorescent 2x2ft
 - Security Camera or sensor
 - Security Panel
 - Phone jack
 - Cable jack
 - Video/audio cables conduit to/from dubbing
 - Railing
 - Wood blocking

15 Glenforest Rd.
 Basement
 Jan 25/05



This power is to be left in ceiling for future use

- SYMBOL KEY:**
- Regular outlet
 - Quad outlet (2 circuits)
 - GFI outlet
 - Separate circuit outlet
 - ISO ground
 - Ethernet RY45 (P is printer port)
 - Fluorescent switch
 - Dimmer Pot light switch
 - Motion control switch
 - 4" recessed halogen
 - Ceiling drop or elbow fixture
 - Wall sconce
 - Recessed Pot with Fluorescent and lens
 - Exterior light
 - Fluorescent 2x2ft
 - Security Camera or sensor
 - Security Panel
 - Phone Jack
 - Cable jack
 - Video/audio cables conduit to/from dubbing
 - Railing
 - Wood blocking
 - Edit cables to boardroom