

SURVEYORS REAL PROPERTY REPORT
PART 1
PLAN OF
PART OF LOTS 16 AND 17
REGISTERED PLAN M-260
CITY OF TORONTO

SCALE 1" = 10'
0 2 10 20 30 FEET
H. PILLER CORPORATION LTD.

Toronto Urban Development Services
Building

PERMIT REVIEWED FOR COMPLIANCE WITH
THE ONTARIO BUILDING CODE

04 111626

ZONING	
O.B.C.	
FIRE SERVICES	

ASSOCIATION OF ONTARIO
LAND SURVEYORS
PLAN SUBMISSION FORM
1463565



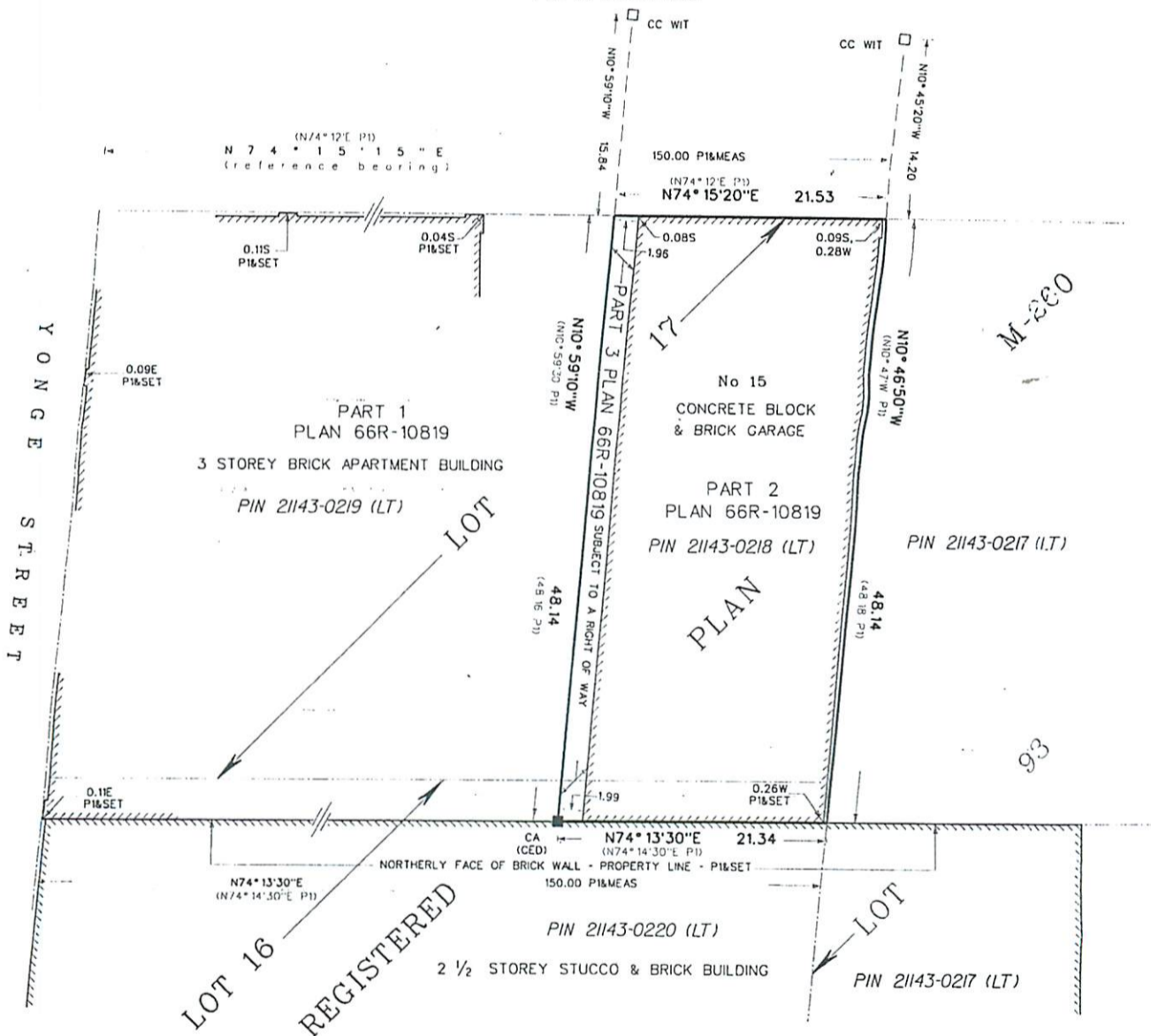
THIS PLAN IS NOT VALID
UNLESS IT IS AN EMBOSSED
ORIGINAL COPY
ISSUED BY THE SURVEYOR
In accordance with
Regulation 1026, Section 29(3).

GLENFOREST ROAD

BY REGISTERED PLAN M-260

(FORMERLY BRECHIN AVENUE)

PIN 21143-0414 (LT)



BEARING NOTE:
Bearings are referred to the southerly limit of Glenforest Road as shown on CTS notes M260-87 having an astronomic bearing of N74°15'15"E.

PART 2 : (see reverse)
This plan must be read in conjunction with the Survey Report dated July 24, 2003.

NOTE :
Distances shown on this plan are in feet and can be converted to metres by multiplying by 0.3048.

LEGEND

■	Monument found	E	East
□	Monument planted	W	West
CC	Cut Cross	N	North
IB	Iron Bar	S	South
SSIB	Short Standard Iron Bar		
SIB	Standard Iron Bar		
WIT	Witness Monument		
O/U	Origin unknown		
MEAS	Measured		
P1	Plan 66R-10819		
CED	C.E. Dotterill, OLS		
CA	Cut Arrow		
CTS	City Of Toronto Survey		

SURVEYOR'S CERTIFICATE
I CERTIFY THAT:

1. This survey and plan are correct and in accordance with the Surveys Act and the Surveyors Act and the regulations made under them;
2. The survey was completed on the 24th day of July, 2003.

July 24, 2003
date
Anna M. Akson
Ontario Land Surveyor

reference number: 03-21-7527-00



H. Piller Corporation Ltd.

TORONTO 416 - 488 - 1174 CANADA