

BRECHIN COMMERCIAL DEVELOPMENT

COMMERCIAL DEVELOPMENT

60118170
 FEBRUARY, 2012

DRAWING INDEX
 GENERAL

GN-1	GENERAL NOTES AND LEGEND
SS-1	SITE SERVICING PLAN
GP-1	SITE GRADING PLAN
STM-1	STORM DRAINAGE PLAN
SC-1	SILT AND EROSION CONTROL
PND-1	STORMWATER MANAGEMENT FACILITY
PND-2	STORMWATER MANAGEMENT FACILITY
SD-1	STANDARD DETAILS
SD-1	STANDARD DETAILS
SD-2	STANDARD DETAILS
SD-3	STANDARD DETAILS

TOWNSHIP OF RAMARA
 2297 HIGHWAY NO. 12
 P.O. BOX 130, BRECHIN, ONTARIO
 L0X 1B0

THE VELTRI GROUP
 68 KING STREET EAST
 BOWMANVILLE, ONTARIO
 L1C 3X2



AECOM Canada Ltd.
 10 Checkley Street, Barrie, Ontario, Canada L4N 1W1
 T705.721.9222 F705.734.0764

ALL DIMENSIONS AND SPACING SHALL BE CHECKED AND APPROVED BY THE ENGINEER.
 THE ENGINEER SHALL BE RESPONSIBLE TO THE CLIENT FOR THE CORRECTNESS OF THE DRAWING.
 THE DRAWING SHALL BE USED ONLY FOR THE PROJECT AND SITE SPECIFICALLY IDENTIFIED.
 ANY CHANGES TO THE DRAWING SHALL BE MADE BY THE ENGINEER AND APPROVED BY THE CLIENT.
 THE ENGINEER SHALL BE RESPONSIBLE FOR THE CORRECTNESS OF THE DRAWING.
 THE DRAWING SHALL BE USED ONLY FOR THE PROJECT AND SITE SPECIFICALLY IDENTIFIED.



AECOM

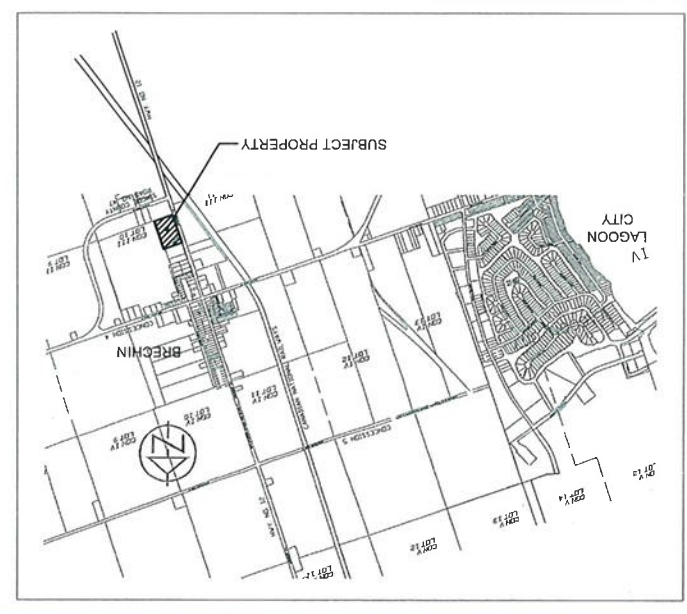
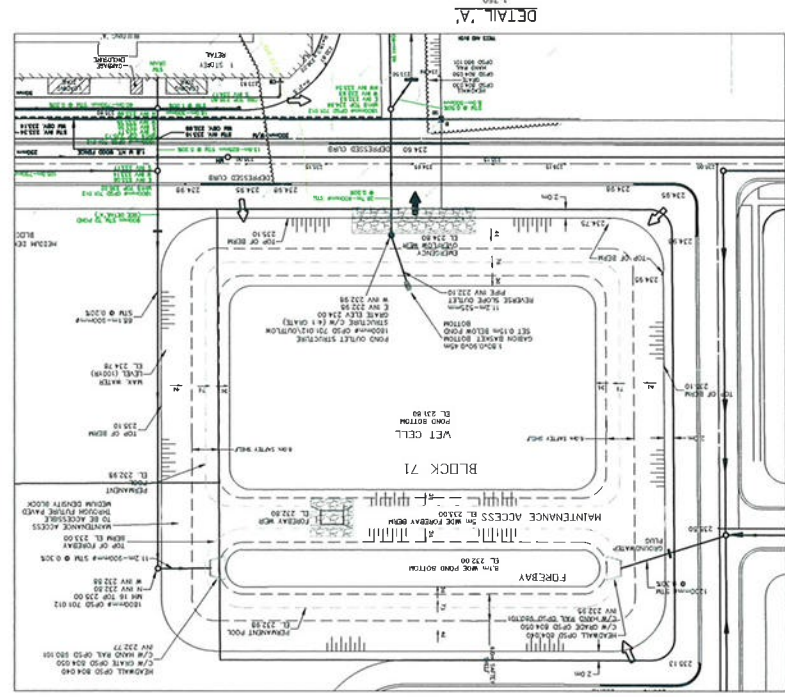
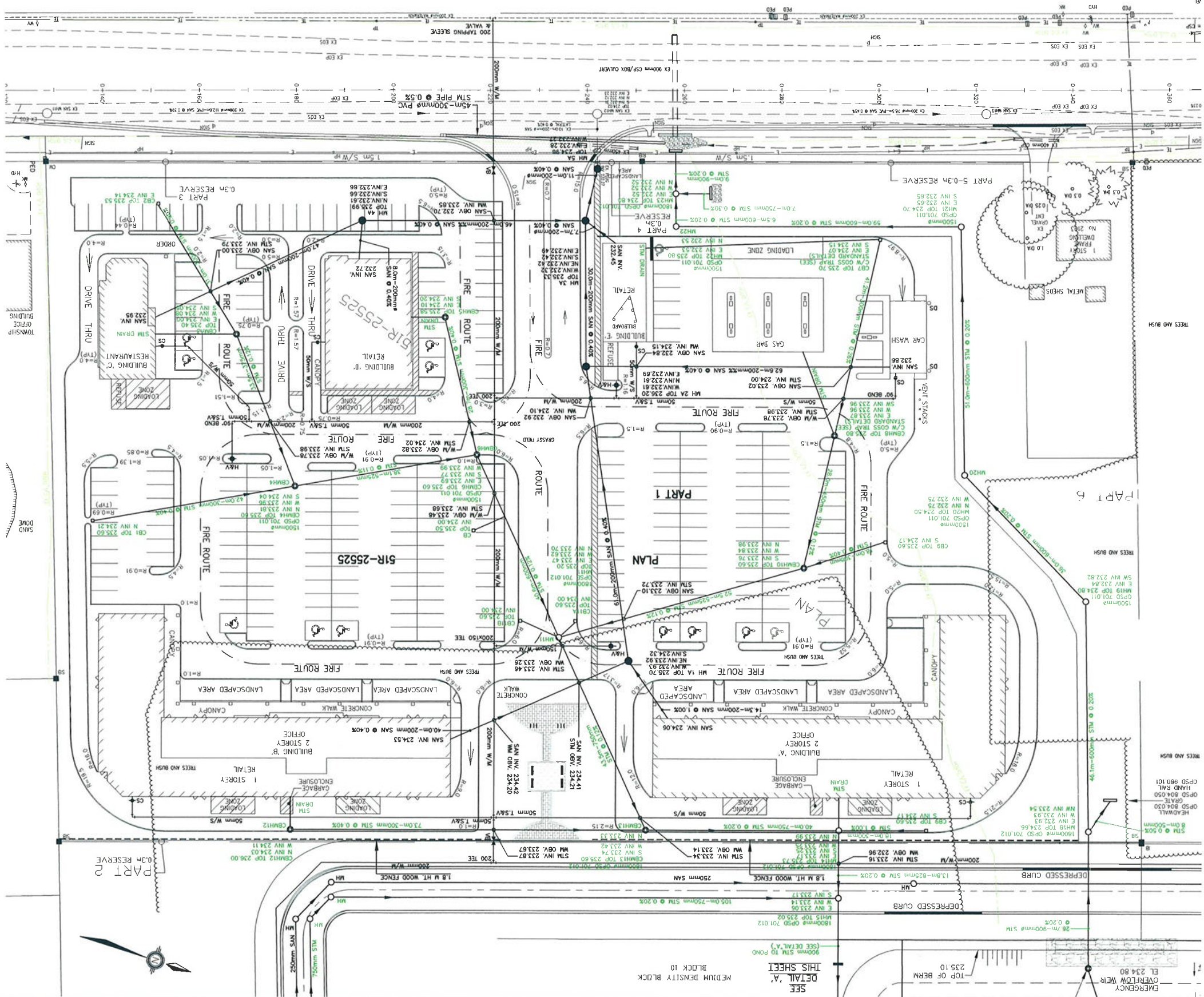
No.	DATE	BY	ISSUES / REVISIONS
2	JAN 2012	RP	REVISED AS PER TOWN ENGINEER'S COMMENTS
1	AUG 2011	RP	REVISED AS PER TOWN ENGINEER'S COMMENTS

**THE VETRI GROUP
 68 KING STREET EAST
 BOWMANVILLE, ONTARIO**

CLIENT	DRAWN BY	CHECKED BY	PROJECT
	M. WERRY	R. PROVENCAL	COMMERCIAL BLOCK AT BRECHIN, ONTARIO
DESIGNED BY	APPROVED BY	DATE	SCALE
	R. PROVENCAL	FEBRUARY, 2010	1:400

**COMMERCIAL BLOCK
 AT BRECHIN, ONTARIO
 SITE SERVICING PLAN**

SS-1
 DRAWING NO. 60118170
 PROJECT NO.



KEY PLAN
 BENCHMARK: ELEVATION 236.436
 DEPARTMENT OF HIGHWAYS BENCHMARK
 # DHO BM-416-71
 BRASS PLATE LOCATED ON SE CORNER OF PERRY
 CHURCH LOCATED ON WEST FACE OF
 AVENUE AND CONVESSION 4

ALL WORKS AND MATERIALS SHALL BE CHECKED AND RECHECKED BY THE L.P. ENGINEER.
 THE WORK DRAWINGS ARE NOT TO BE SCALE.
 THIS DRAWING IS THE PROPERTY OF AECOM CONSULTANTS INC. AND IS NOT TO BE REPRODUCED OR TRANSMITTED IN ANY FORM OR BY ANY MEANS, ELECTRONIC OR MECHANICAL, INCLUDING PHOTOCOPYING, RECORDING, OR BY ANY INFORMATION STORAGE AND RETRIEVAL SYSTEM, WITHOUT THE WRITTEN PERMISSION OF AECOM CONSULTANTS INC.



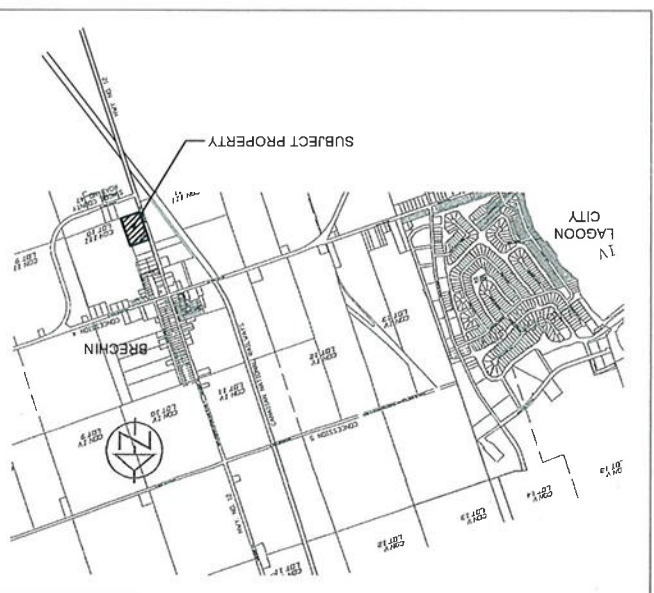
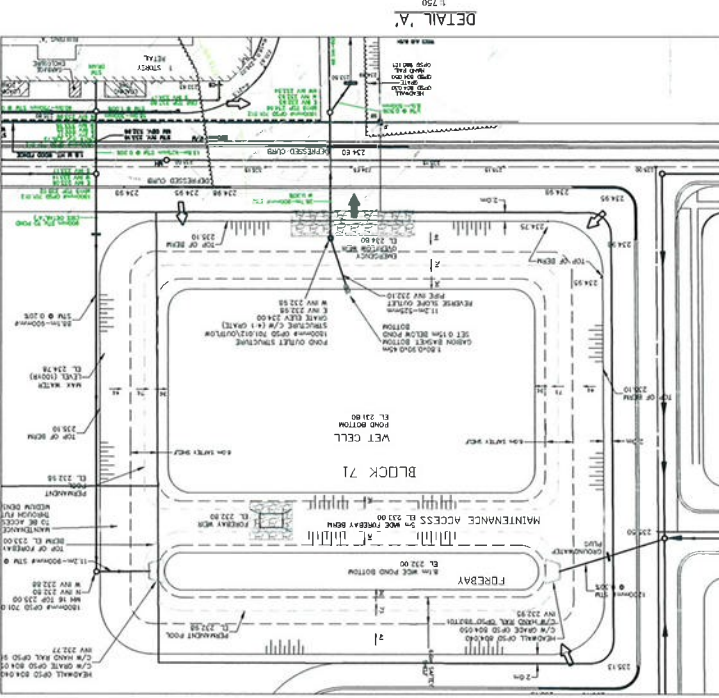
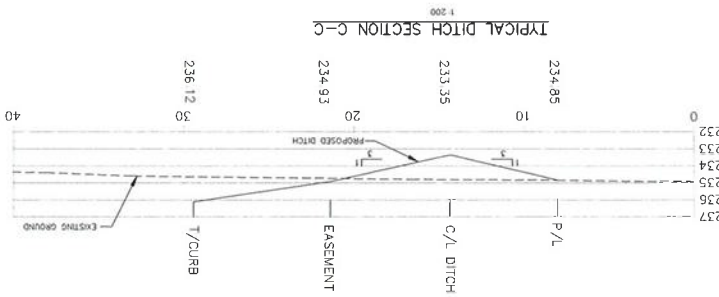
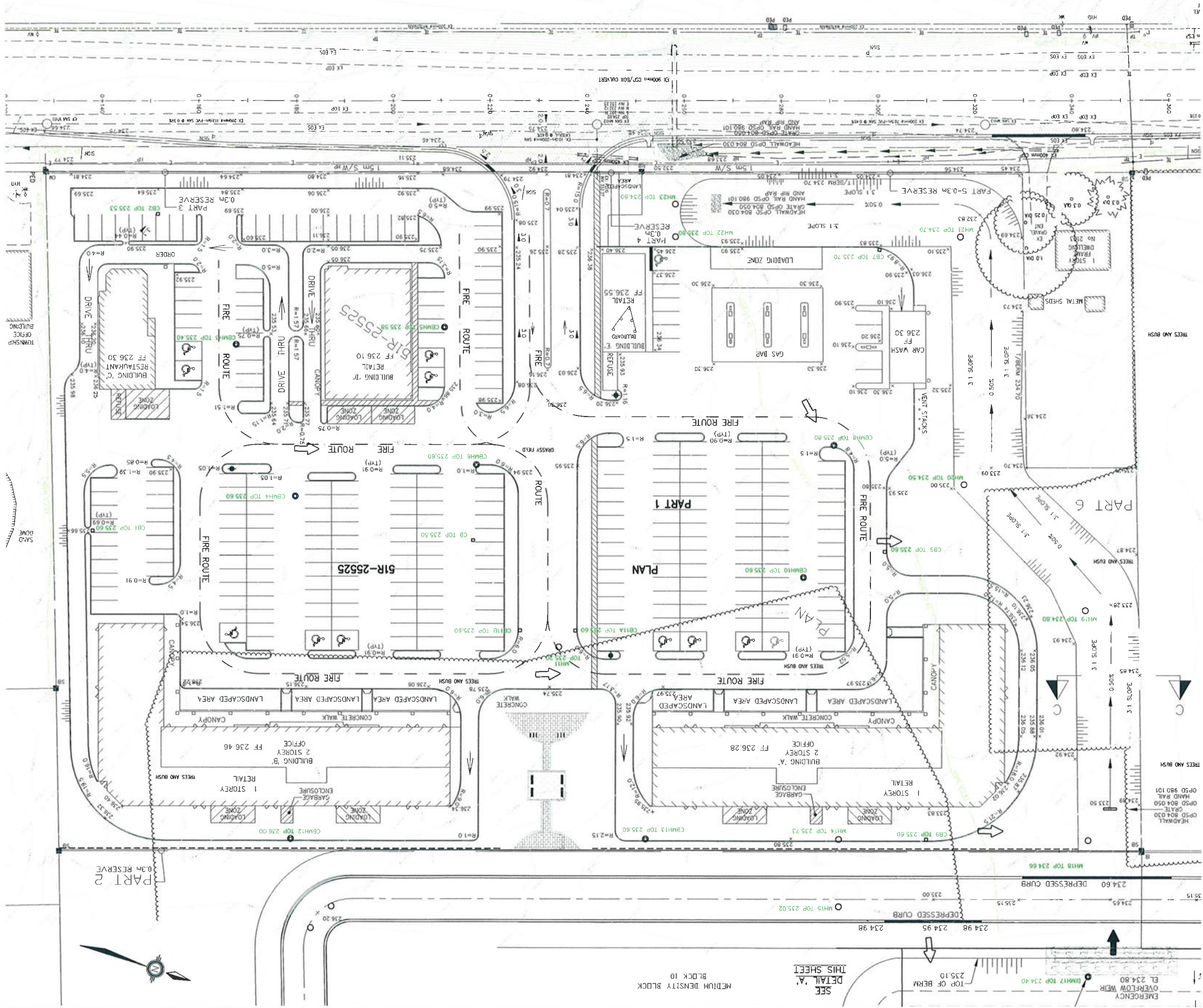
AECOM

No.	DATE	BY	ISSUES / REVISIONS
2	JAN 2012	RP	REVISED AS PER TOWN ENGINEER'S COMMENTS
1	AUG 2011	RP	REVISED AS PER TOWN ENGINEER'S COMMENTS

THE VELTRI GROUP
68 KING STREET EAST
BOWMANVILLE, ONTARIO

PROJECT:	COMMERCIAL BLOCK AT BRECHIN, ONTARIO
CHECKED BY:	M. WERBY
DESIGNED BY:	J.K. / M.W.
APPROVED BY:	R. PROVENCAL
DATE:	FEBRUARY, 2010
SCALE:	1:400

COMMERCIAL BLOCK AT BRECHIN, ONTARIO
SITE GRADING PLAN
GP-1



KEY PLAN
 BENCHMARK ELEVATION 236.438
 DEPARTMENT OF HIGHWAYS BENCHMARK
 # BM-418-71
 CHURCH LOCATED ON SE CORNER OF PERRY
 AVENUE AND CONCESSION 4

SEE DETAIL A. OVERFLOW WEIR EL. 234.80
 TOP OF BERM 235.10
 DEPRESSIONED CURB 234.98
 DEPRESSIONED CURB 234.60
 MHI7 TOP 234.40
 MHI2 TOP 234.40
 MHI1 TOP 234.66
 MHI9 TOP 234.80
 MHI10 TOP 234.80
 MHI11 TOP 235.60
 MHI12 TOP 235.60
 MHI13 TOP 235.60
 MHI14 TOP 235.73
 MHI15 TOP 235.80
 MHI16 TOP 235.80
 MHI17 TOP 235.80
 MHI18 TOP 235.80
 MHI19 TOP 235.80
 MHI20 TOP 235.80
 MHI21 TOP 235.80
 MHI22 TOP 235.80
 MHI23 TOP 235.80
 MHI24 TOP 235.80
 MHI25 TOP 235.80
 MHI26 TOP 235.80
 MHI27 TOP 235.80
 MHI28 TOP 235.80
 MHI29 TOP 235.80
 MHI30 TOP 235.80
 MHI31 TOP 235.80
 MHI32 TOP 235.80
 MHI33 TOP 235.80
 MHI34 TOP 235.80
 MHI35 TOP 235.80
 MHI36 TOP 235.80
 MHI37 TOP 235.80
 MHI38 TOP 235.80
 MHI39 TOP 235.80
 MHI40 TOP 235.80
 MHI41 TOP 235.80
 MHI42 TOP 235.80
 MHI43 TOP 235.80
 MHI44 TOP 235.80
 MHI45 TOP 235.80
 MHI46 TOP 235.80
 MHI47 TOP 235.80
 MHI48 TOP 235.80
 MHI49 TOP 235.80
 MHI50 TOP 235.80
 MHI51 TOP 235.80
 MHI52 TOP 235.80
 MHI53 TOP 235.80
 MHI54 TOP 235.80
 MHI55 TOP 235.80
 MHI56 TOP 235.80
 MHI57 TOP 235.80
 MHI58 TOP 235.80
 MHI59 TOP 235.80
 MHI60 TOP 235.80
 MHI61 TOP 235.80
 MHI62 TOP 235.80
 MHI63 TOP 235.80
 MHI64 TOP 235.80
 MHI65 TOP 235.80
 MHI66 TOP 235.80
 MHI67 TOP 235.80
 MHI68 TOP 235.80
 MHI69 TOP 235.80
 MHI70 TOP 235.80
 MHI71 TOP 235.80
 MHI72 TOP 235.80
 MHI73 TOP 235.80
 MHI74 TOP 235.80
 MHI75 TOP 235.80
 MHI76 TOP 235.80
 MHI77 TOP 235.80
 MHI78 TOP 235.80
 MHI79 TOP 235.80
 MHI80 TOP 235.80
 MHI81 TOP 235.80
 MHI82 TOP 235.80
 MHI83 TOP 235.80
 MHI84 TOP 235.80
 MHI85 TOP 235.80
 MHI86 TOP 235.80
 MHI87 TOP 235.80
 MHI88 TOP 235.80
 MHI89 TOP 235.80
 MHI90 TOP 235.80
 MHI91 TOP 235.80
 MHI92 TOP 235.80
 MHI93 TOP 235.80
 MHI94 TOP 235.80
 MHI95 TOP 235.80
 MHI96 TOP 235.80
 MHI97 TOP 235.80
 MHI98 TOP 235.80
 MHI99 TOP 235.80
 MHI100 TOP 235.80

ALL DIMENSIONS AND ANNOTATIONS SHALL BE CHECKED AND VERIFIED BY THE JOB AND AN APPROVED SURVEYOR. THE ENGINEER SHALL BE RESPONSIBLE TO THE CLIENT FOR THE ACCURACY OF THE INFORMATION PROVIDED. THE ENGINEER'S LIABILITY IS LIMITED TO THE PROFESSIONAL SERVICES PROVIDED. THE ENGINEER DOES NOT WARRANT THE ACCURACY OF THE INFORMATION PROVIDED. THE ENGINEER'S LIABILITY IS LIMITED TO THE PROFESSIONAL SERVICES PROVIDED. THE ENGINEER DOES NOT WARRANT THE ACCURACY OF THE INFORMATION PROVIDED.



AECOM

AECOM Canada Ltd.
15 Oakway Square, Suite 200, Oakville, Ontario L6M 1W1
Tel: 905.771.8222 Fax: 905.771.8714

NO.	DATE	BY	ISSUES / REVISIONS
1	MAR 2011	R.P.	REVISED FOR SUBMISSION TO TOWNSHIP

THE VELTRI GROUP
68 KING STREET EAST
BOWMANVILLE, ONTARIO

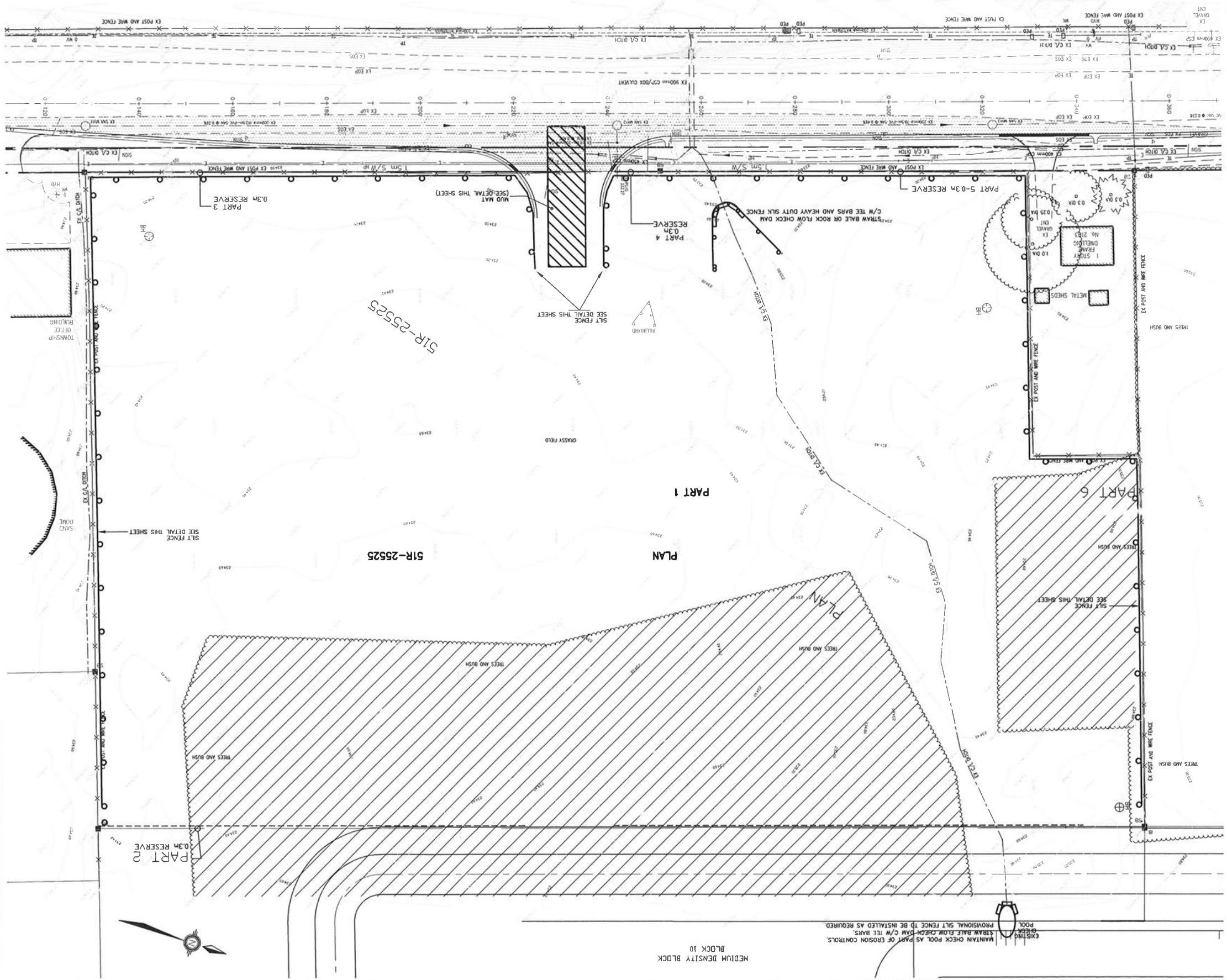
SILT & EROSION CONTROL PLAN

SC-1

PROJECT NO. 60118170

COMMERCIAL BLOCK
AT BRECHIN, ONTARIO

DRAWN BY: M.EGO	CHECKED BY: M.EGO
DESIGNED BY: M.EGO	APPROVED BY: R. PROVENCAL
DATE: FEBRUARY, 2010	SCALE: 1:600



LEGEND

- EXIST. TREE AREA BOUNDARY
- CUTOFF SWALE
- PROPOSED SILT FENCE (SEE DETAIL THIS SHEET)
- ROCK CHECK DAM (SEE DETAIL THIS SHEET)
- NOTE: ADDITIONAL ROCK CHECK DAMS DURING CONSTRUCTION AS REQUIRED.

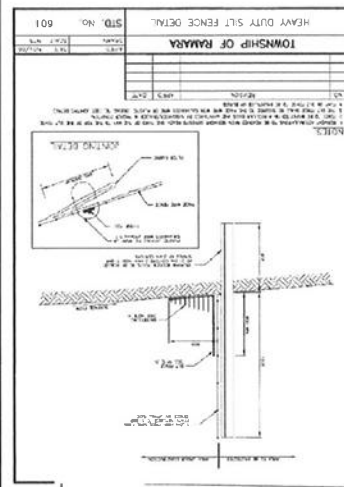
POST CONSTRUCTION SITUATION CONTROL

1. ALL SILT FENCE TO REMAIN UNTIL UPSTREAM RUNOFF AREA IS RESTORED.
2. STREETS TO BE CLEANED ON A REGULAR BASIS AS NECESSARY.
3. DRAINAGE CHANNEL TO BE MONITORED FOR SEDIMENT BUILD-UP AND CLEANED OUT AS REQUIRED.
4. NEW C/S ARE TO BE COVERED WITH FILTER CLOTH AFTER INSTALLATION. FILTER CLOTH IS TO BE REPLACED AS REQUIRED AND AS DIRECTED BY THE ENGINEER AND/OR SILT IS TO BE REMOVED.

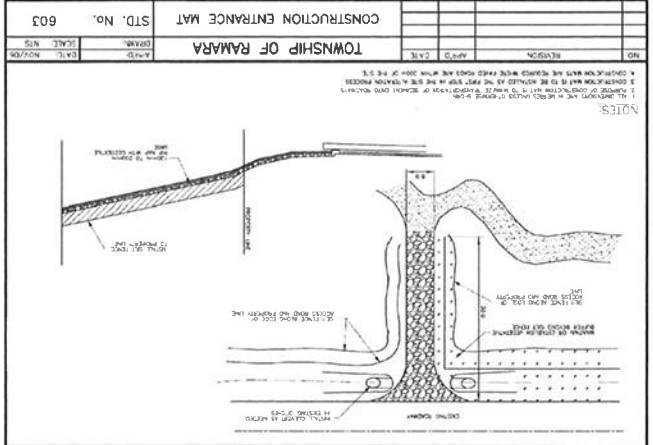
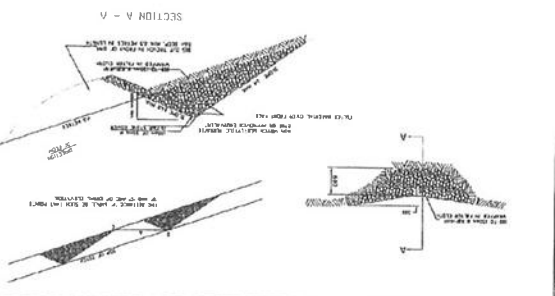
INSPECTIONS ARE ALSO TO OCCUR AFTER EVERY SIGNIFICANT RAINFALL EVENT OF 12mm OR MORE.

SCHEDULE OF WORK

BENCHMARK: ELEVATION 236.438
410 B.M. 416-71
DEPARTMENT OF HIGHWAYS BENCHMARK
BRASS PLATE LOCATED ON SE CORNER OF PERRY
AVENUE AND CONCESSION 4.



Siltation and Erosion Control Project
2003-08-29
Granular Erosion Control Device



EXIST. TREE AREA BOUNDARY
PROVISIONAL SILT FENCE TO BE INSTALLED AS REQUIRED.
STRAW BALE FLOW CHECK DAM C/W TEE BARS
MAINTAIN CHECK POOL AS PART OF EROSION CONTROLS.

MEDIUM DENSITY BLOCK
BLOCK 10

This drawing has been prepared by a firm of Accredited Engineers and Surveyors and the Engineer is not responsible for any errors or omissions in the drawing or for any consequences arising therefrom. The Engineer's liability is limited to the professional services provided by him or her.



AECOM

AECOM Canada Ltd.
10 Cheskey Street, Suite 200, Toronto, Ontario, Canada M4M 1W1
7705 721 9222 F705 734 0764

No.	DATE	BY	REVISIONS / COMMENTS
1	JAN /12	M.W.	REVISED AS PER TOWNSHIP COMMENTS

CLIENT
THE VETTRI GROUP
88 KING STREET EAST
BOWMANVILLE, ONTARIO

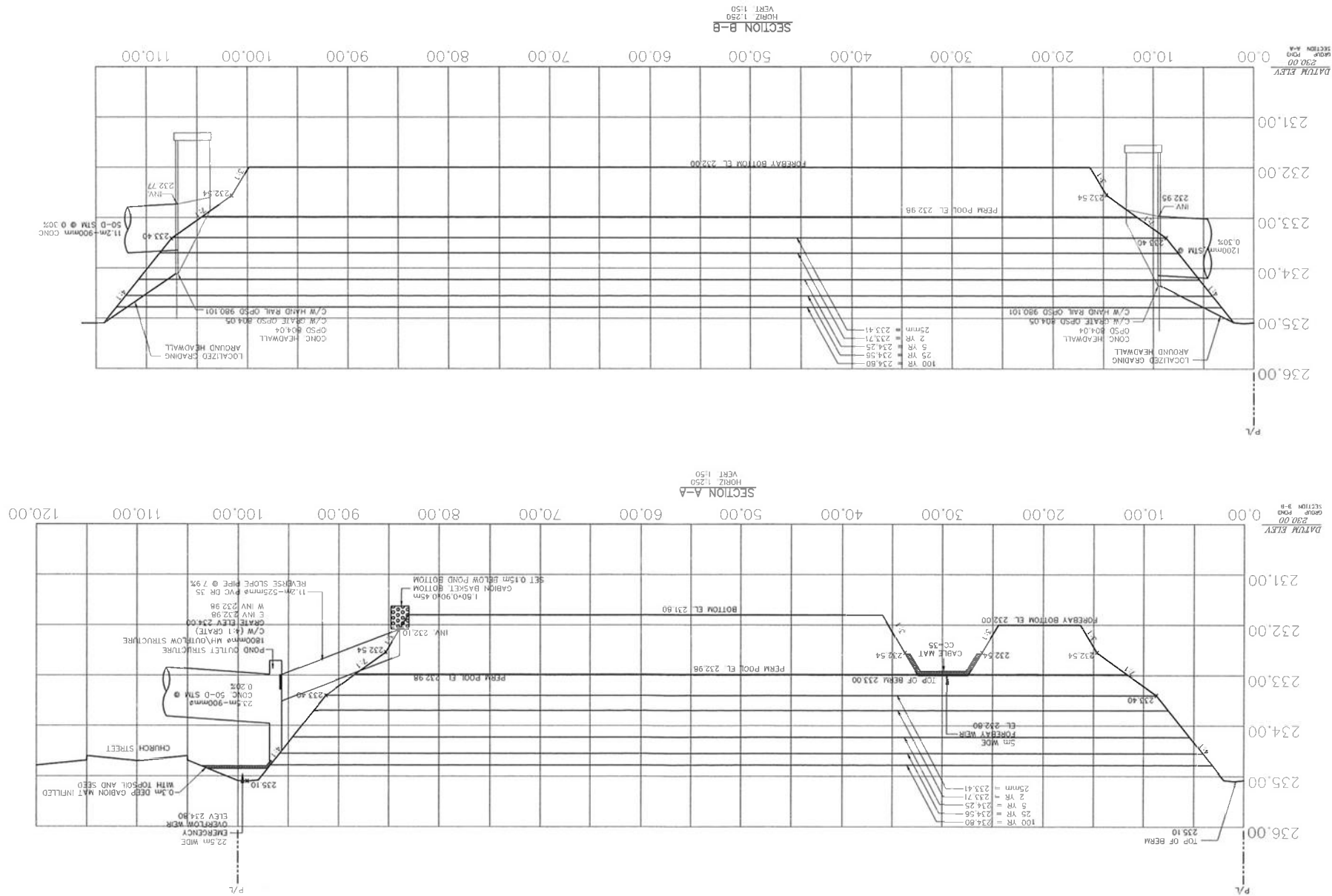
DRAWN BY	CHECKED BY	DESIGNED BY	APPROVED BY	SCALE	DATE	AS SHOWN
S. SMITH	R. PROVENCA	M. EGO	R. PROVENCA		AUGUST, 2011	

PROJECT
BRECHIN SUBDIVISION AND
COMMERCIAL BLOCK

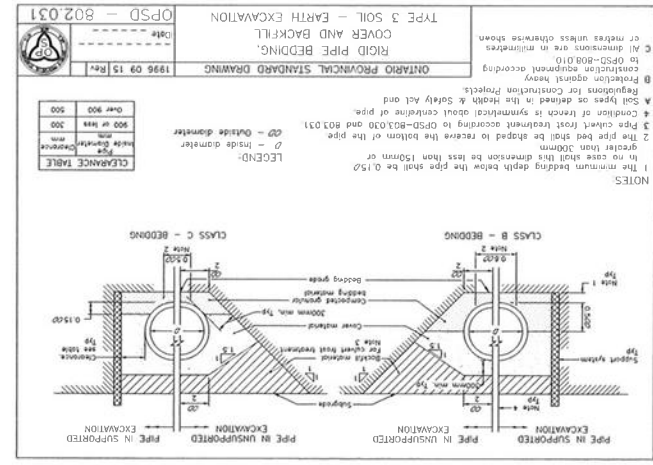
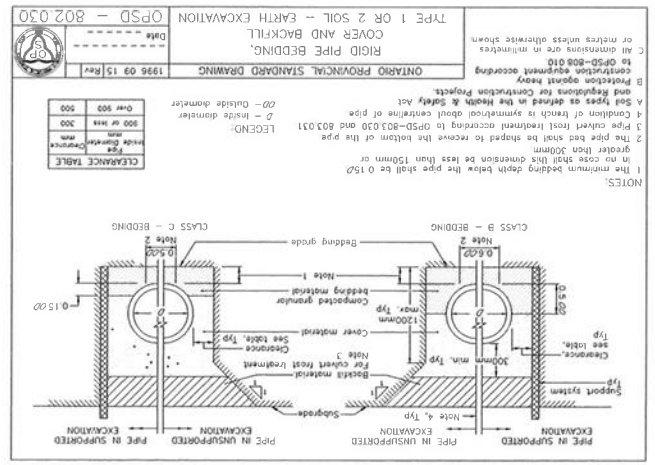
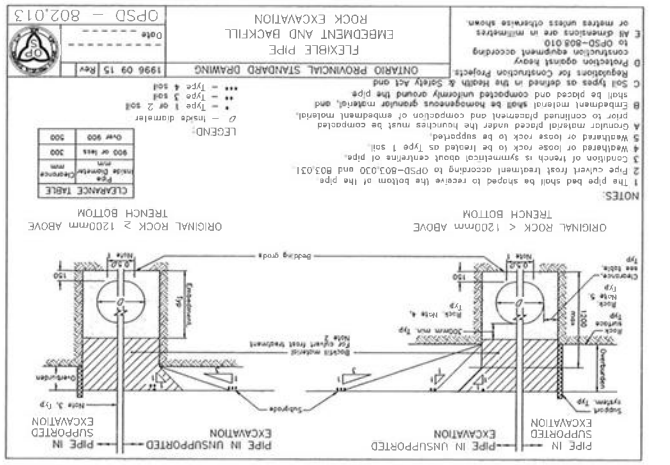
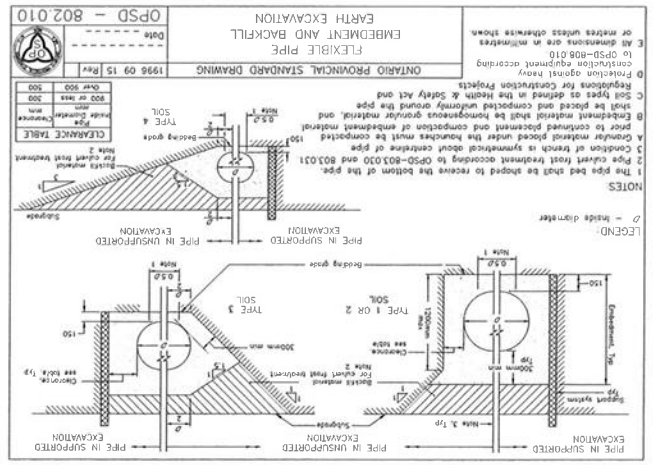
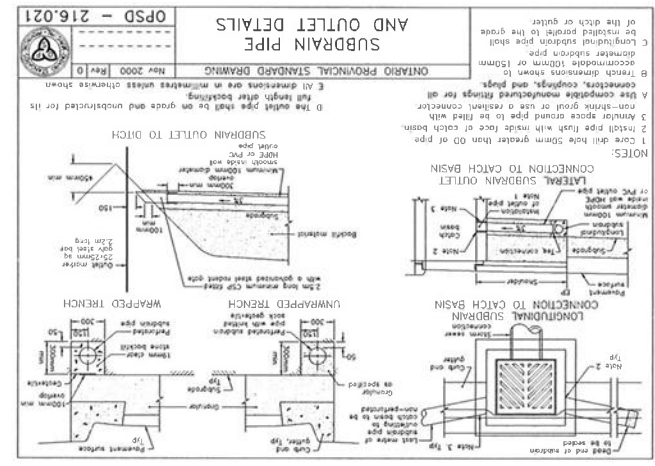
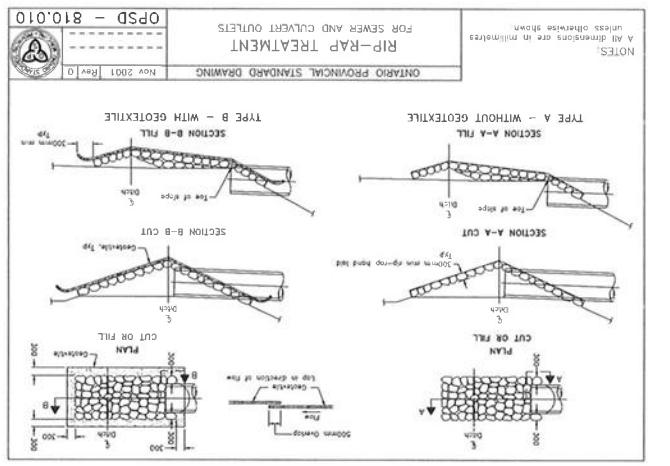
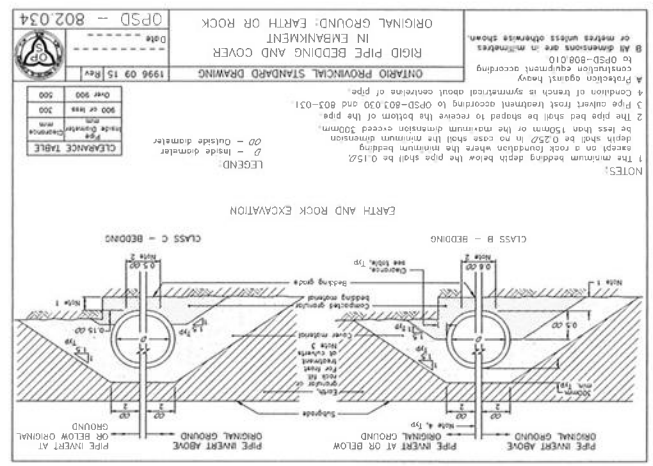
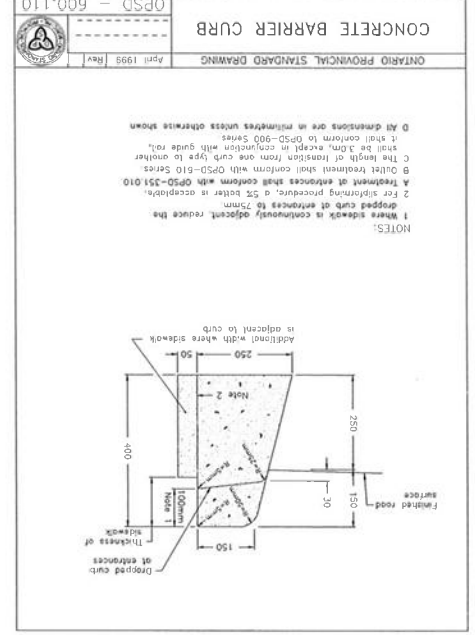
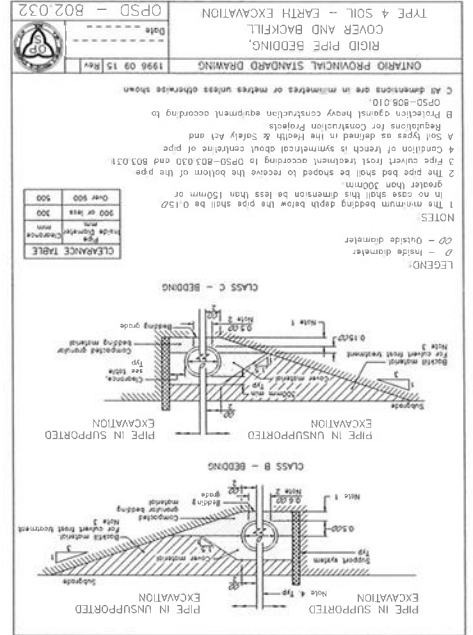
DRAWING
STORMWATER MANAGEMENT FACILITY

PND-2

PROJECT No.
60118170



SD-1	PROJECT NO.: 60118170 DRAWING NO. 60118170	STANDARD DETAILS COMMERCIAL BLOCK AT BRECHIN, ONTARIO	DRAWING: DATE: FEBRUARY, 2010	SCALE: AS SHOWN	CLIENT: THE VELTRI GROUP 68 KING STREET EAST BOWMANVILLE, ONTARIO	ISSUES / REVISIONS	 AECOM CANADA 1100, 711 0222 7703 7074 1100 King Street West, Toronto, Ontario M5X 1K1	 R.P. PROVINCIAL ONTARIO PROFESSIONAL ENGINEER	ALL DIMENSIONS ARE IN MILLIMETERS UNLESS OTHERWISE SHOWN THE WORK IS SUBJECT TO THE STANDARD SPECIFICATIONS AND SPECIFICATIONS OF THE PROVINCE OF ONTARIO AND THE STANDARD SPECIFICATIONS OF THE PROVINCE OF ONTARIO THE WORK IS SUBJECT TO THE STANDARD SPECIFICATIONS AND SPECIFICATIONS OF THE PROVINCE OF ONTARIO AND THE STANDARD SPECIFICATIONS OF THE PROVINCE OF ONTARIO
-------------	---	---	----------------------------------	-----------------	---	--------------------	---	--	--



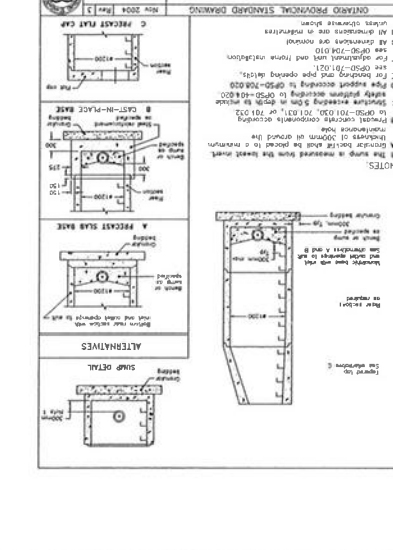
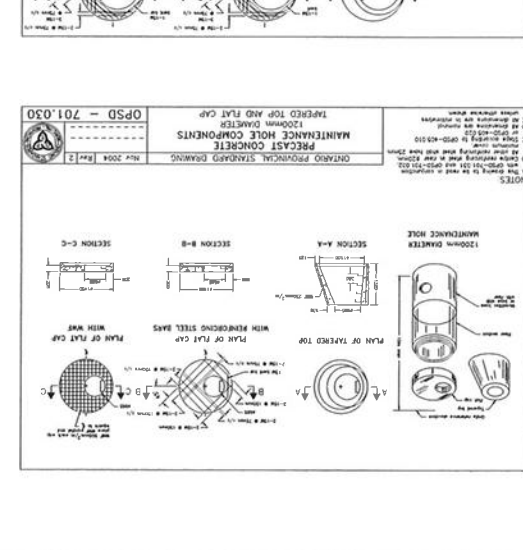
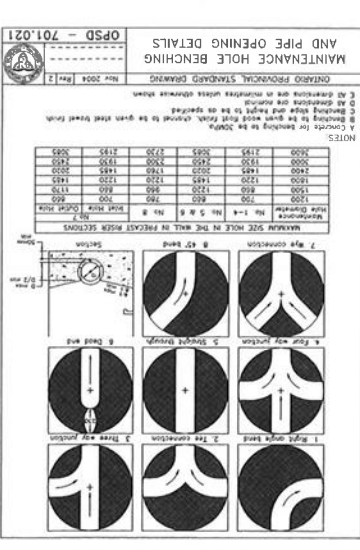
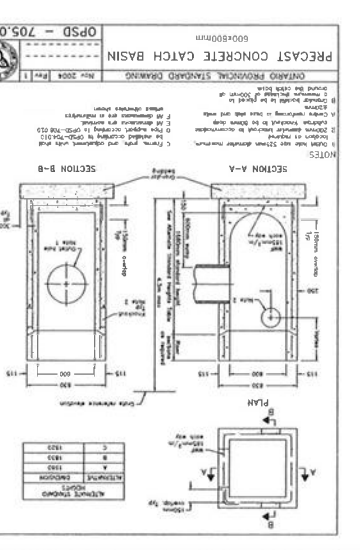
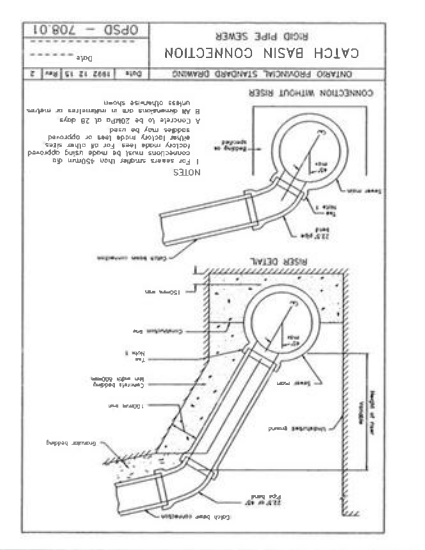
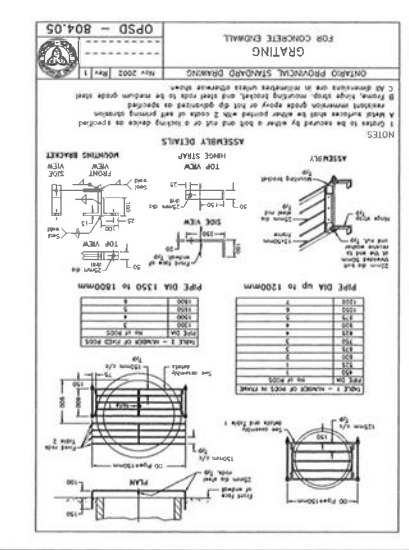
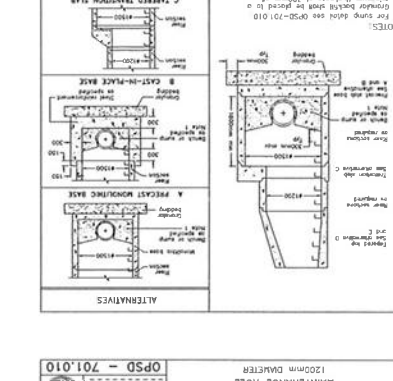
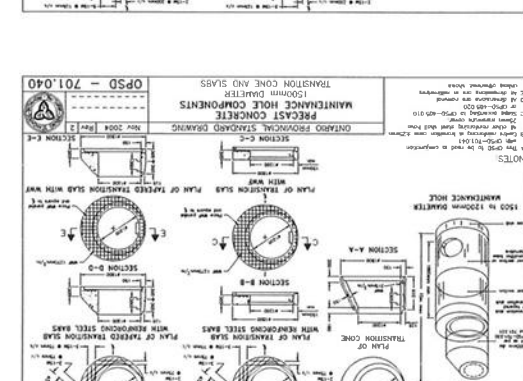
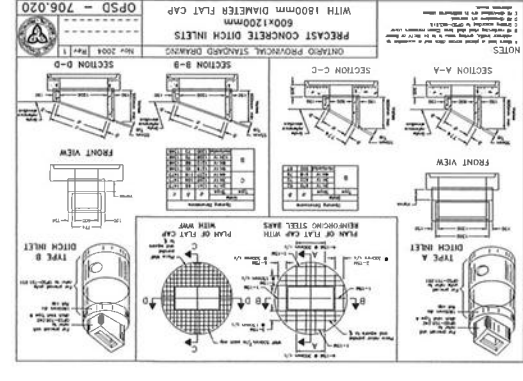
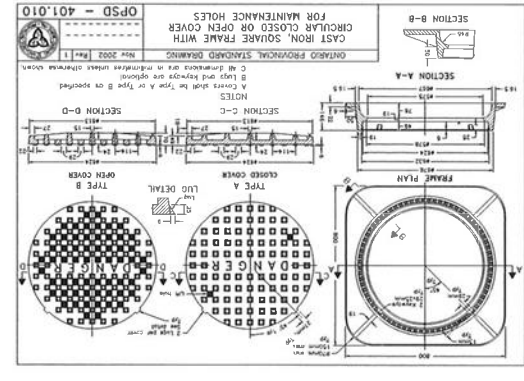
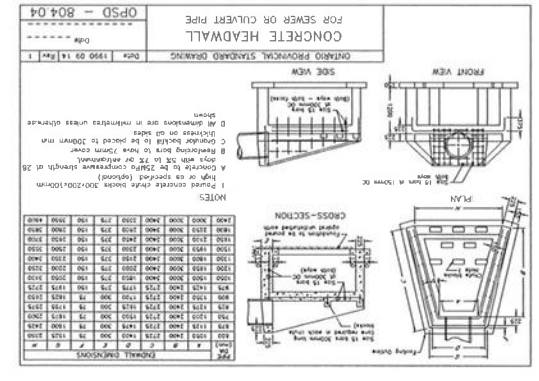
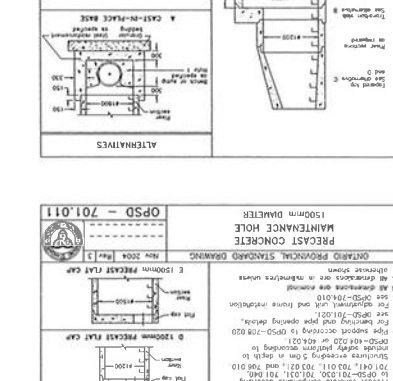
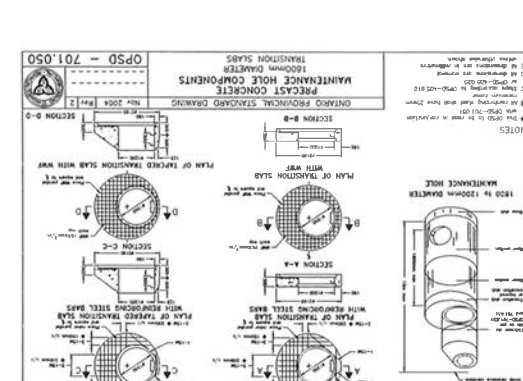
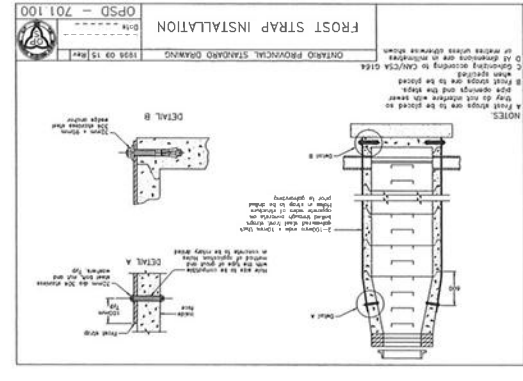
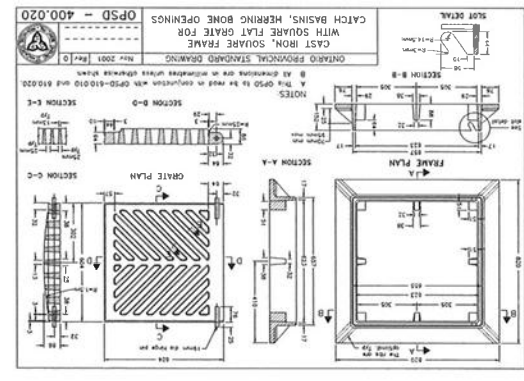
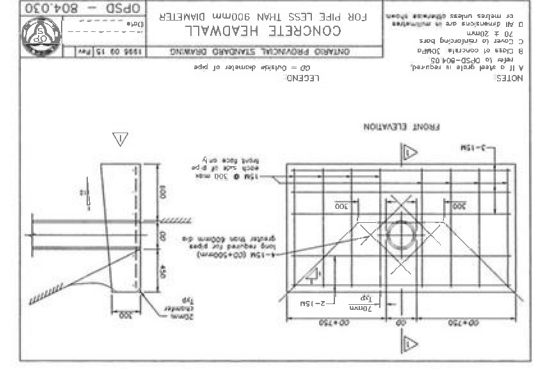
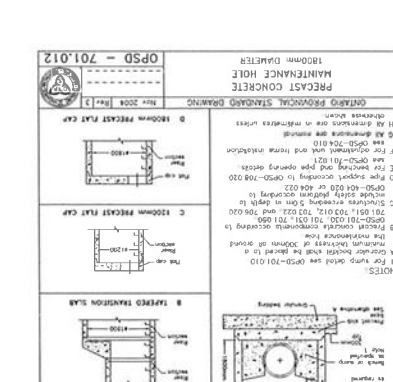
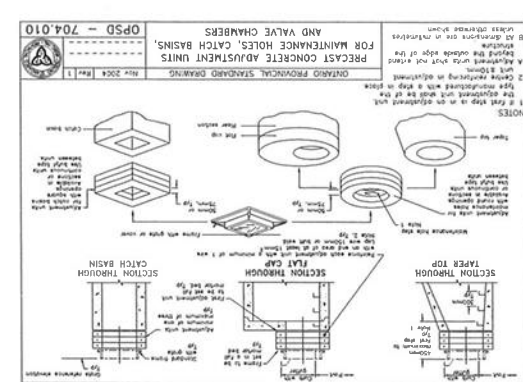
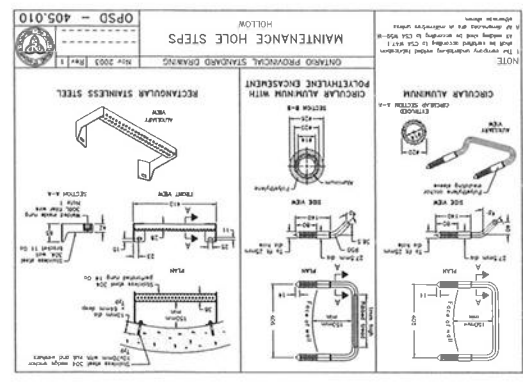
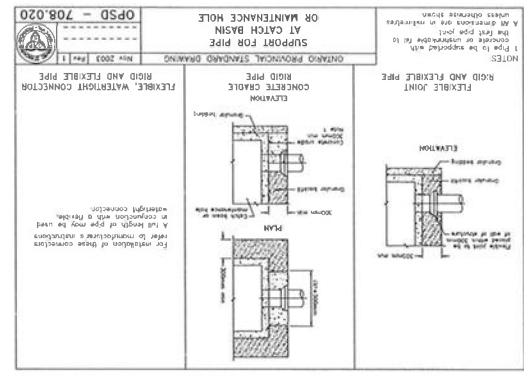
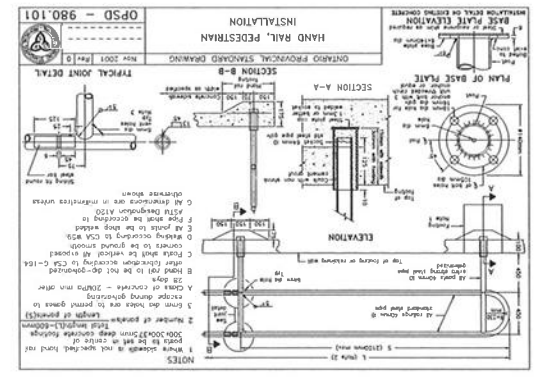
X:\Users\GROSS TRAP, t.f\X:\Users\GROSS SIDEWALK.TIF

NO.	DATE	BY	ISSUES / REVISIONS
1			



APPROVED FOR CONSTRUCTION
10 CROCKER STREET, TORONTO, ONTARIO, CANADA M5H 1W1
7705.771, 9222.7705, 724.7704

THIS DRAWING IS THE PROPERTY OF AECOM. IT IS TO BE USED ONLY FOR THE PROJECT AND SITE SPECIFICALLY IDENTIFIED HEREON. IT IS NOT TO BE REPRODUCED, COPIED, OR TRANSMITTED IN ANY FORM OR BY ANY MEANS, ELECTRONIC OR MECHANICAL, INCLUDING PHOTOCOPYING, RECORDING, OR BY ANY INFORMATION STORAGE AND RETRIEVAL SYSTEM, WITHOUT THE WRITTEN PERMISSION OF AECOM.



ALL DIMENSIONS AND FINISHES SHALL BE CHECKED AND VERIFIED ON THE JOB AND REPORTED TO THE CLIENT IMMEDIATELY.
 ANY DIMENSIONS NOT SPECIFIED SHALL BE TO THE STANDARD PRACTICES OF THE PROFESSION.
 THE WORK SHALL BE IN ACCORDANCE WITH THE CANADIAN STANDARDS FOR CONSTRUCTION.
 ANY DIMENSIONS NOT SPECIFIED SHALL BE TO THE STANDARD PRACTICES OF THE PROFESSION.
 THE WORK SHALL BE IN ACCORDANCE WITH THE CANADIAN STANDARDS FOR CONSTRUCTION.



AECOM

AECOM Canada Ltd
 10 Church Street, Suite 2000, Toronto, Ontario, M5W 1W1
 TEL: 416-593-7777 FAX: 416-593-7778

NO.	DATE	BY	ISSUES / REVISIONS
1			

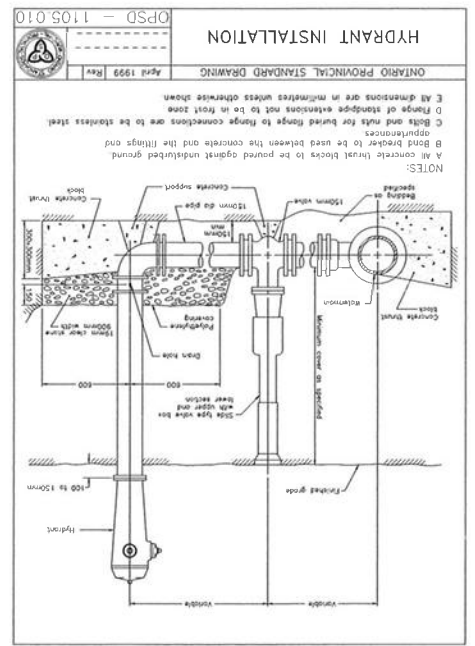
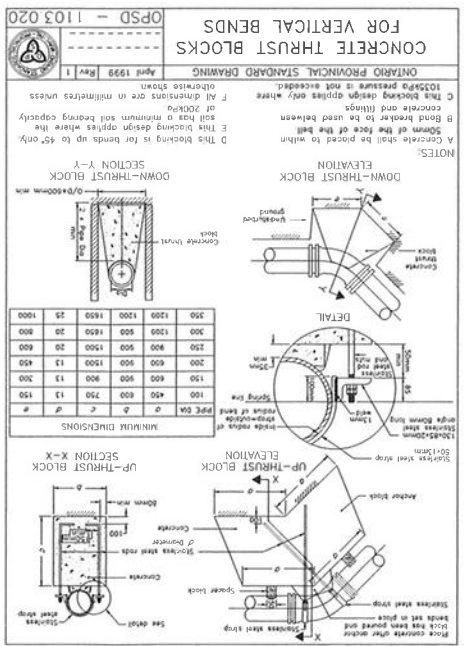
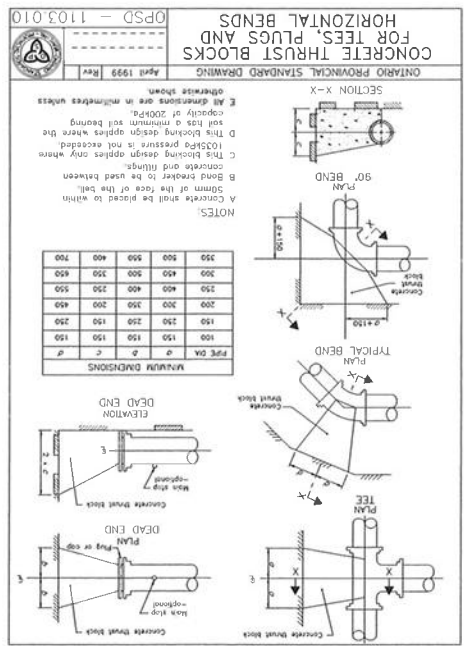
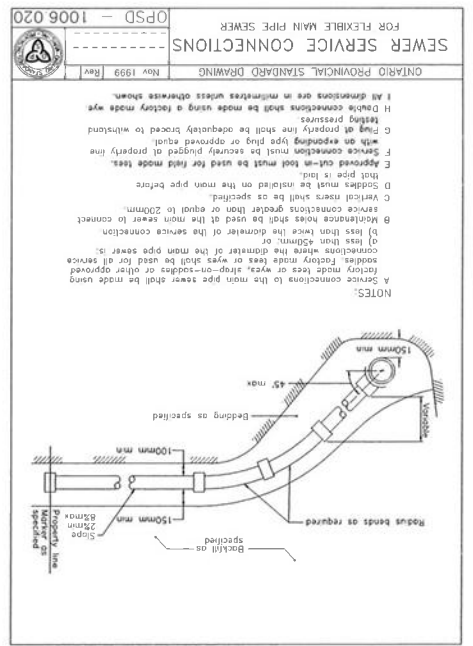
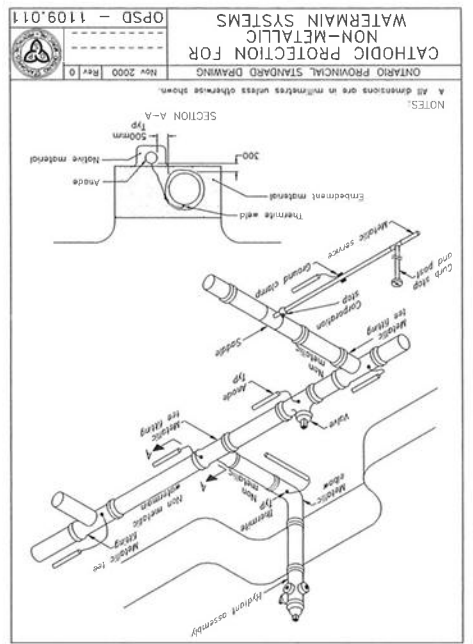
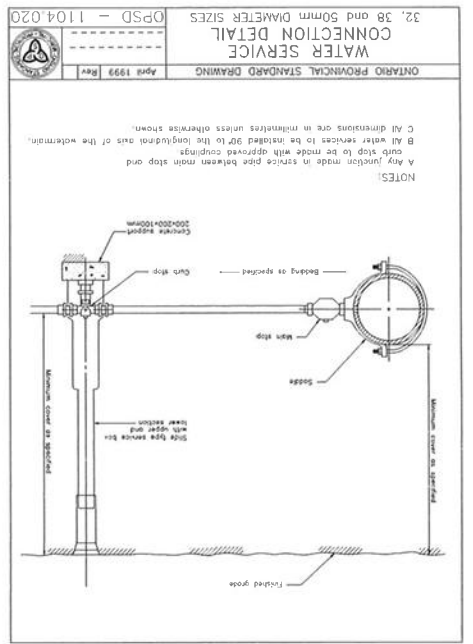
CLIENT: **THE VELTRI GROUP
 68 KING STREET EAST
 BOWMANVILLE, ONTARIO**

SCALE:	DATE:
AS SHOWN	FEBRUARY, 2010

PROJECT: **COMMERCIAL BLOCK
 AT BRECHIN, ONTARIO**

SD-3

PROJECT No.: 6018170
 DRAWING No.:



X:\Users\TRACER WIRE 1.tif X:\Users\TRACER WIRE 2.tif X:\Users\WOOD FENCE.tif

X:\Users\HYDRANT BARRIER.tif