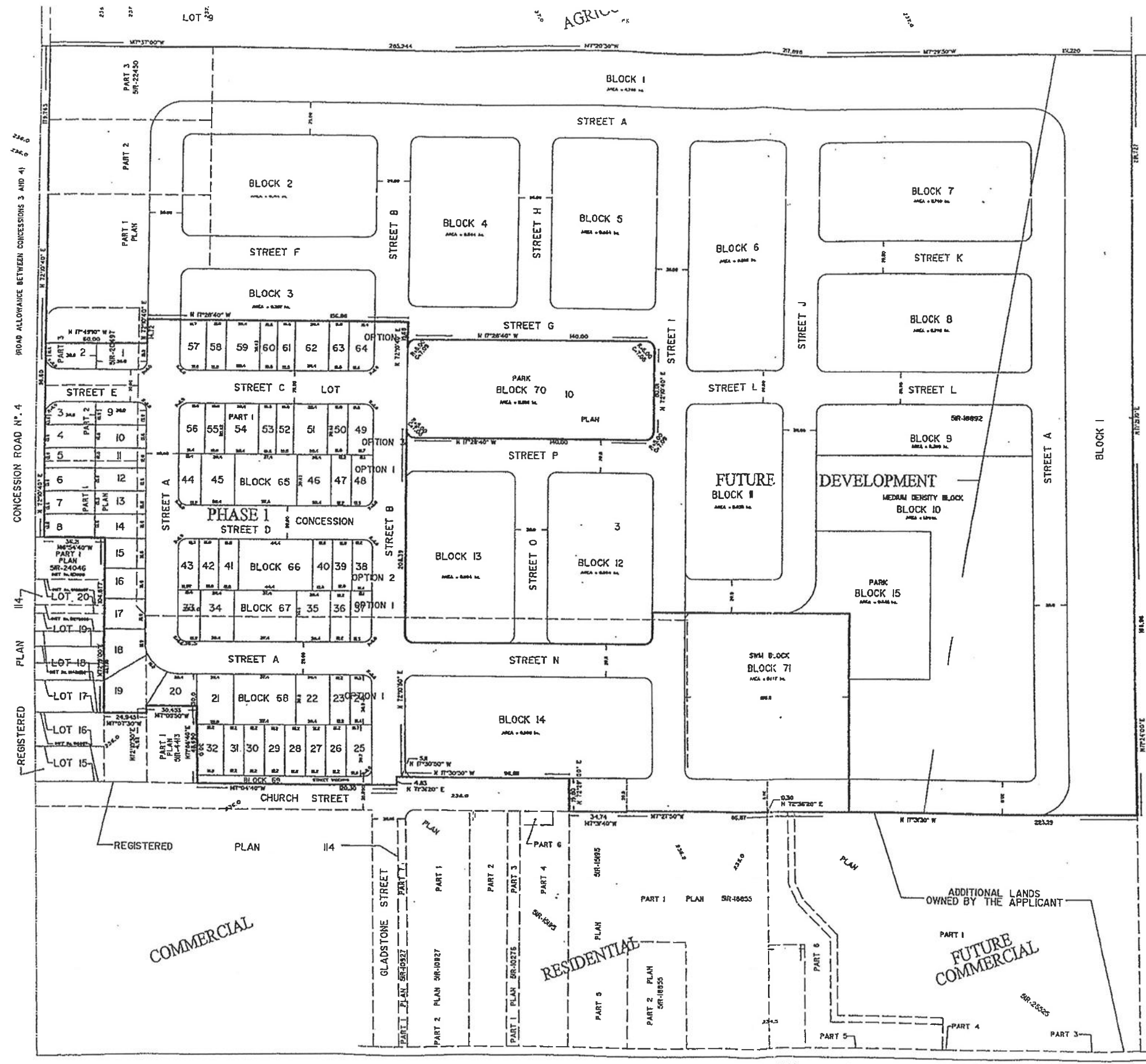
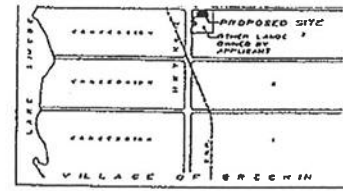


Breechen Residential first phase and Commercial Block

INSTITUTIONAL/RESIDENTIAL



CONCESSION 3



DRAFT PLAN OF SUBDIVISION OF
PART OF LOT 10
CONCESSION 3
(GEOGRAPHIC TOWNSHIP OF MARA
NOW IN THE
TOWNSHIP OF RAMARA
COUNTY OF SIMCOE
SCALE 1:1000
J. D. BARNES LIMITED

METRIC DISTANCES SHOWN ON THIS PLAN ARE IN METRES AND CAN BE CONVERTED TO FEET BY DIVIDING BY 0.3048

Schedule of Land Use				
Lot/Block No.	Land Use	Units	Area (hectares)	Area (acres)
1 to 64	Block (R2) Single Family	6		
	Block (S2) Single Family	8		
	Block (H2) Single Family	8		
	Block (M2) Single Family	2		
	Block (S2) Single Family	4		
	Self Detached	30		
	TOTAL NUMBER OF UNITS	74	2,840 ha	7,028 ac
Blocks 63, 64, 67 and 68	Town House	28	0.477 ha	1,178 ac
	SUBTOTAL	25	3.37 ha	8.37 ac
Block 14	Future Low Density Residential Block		0.304 ha	0.74 ac
Block 63	Street Widening		0.052 ha	0.128 ac
Block 70	Park		0.086 ha	0.213 ac
Block 71	Swamp		0.917 ha	2.26 ac
Streets (Street 'A', 'B', 'C', 'D', 'E' and 'F')	Length of Streets	1768.5m	2.646 ha	6.528 ac
	SUBTOTAL PHASE I	55	2.86 ha	7.170 ac
Blocks 1-9 and 1-13	Future Low Density Residential Block	300	1.82 ha	4.518 ac
Block 10	Future Medium Density Residential Block	30	1.84 ha	4.548 ac
	SUBTOTAL		3.66 ha	9.066 ac
Block 15	Park		0.545 ha	1.347 ac
Streets (Street 'G', 'H', 'I', 'J', 'K', 'L', 'M', 'N', 'O', 'P', 'Q', 'R', 'S', 'T', 'U' and 'V')	Length of Streets	2403.5m	5.176 ha	12.74 ac
	SUBTOTAL Future Development	330	10.04 ha	24.836 ac
	TOTAL	431	28.94 ha	71.925 ac

INDUSTRIAL

COMMERCIAL

RESIDENTIAL

FUTURE COMMERCIAL

Additional Information
As required under Section 5(1)(7) of the Planning Act R.S.O. 1990
(a) As shown on this Draft and Key Plan.
(b) Land to be used in accordance with the Schedule of Land Use.
(c) Full municipal services.
NOTE: Contours relate to Canadian Geodetic Datum.

Owner's Authorization
Veltri Group Limited being the registered owners of the subject lands hereby authorizes J.D. Barnes Limited to prepare and submit this draft plan of subdivision for approval.
VELTRIGROUP LIMITED
Date: _____

MARIO VELTRI
PRESIDENT

SURVEYOR'S CERTIFICATE
I CERTIFY THAT:
HEREBY CERTIFY THAT THE DIMENSIONS OF THE LAND TO BE DEVELOPED AS SHOWN ON THIS PLAN AND THEIR RELATIONSHIP TO THE ADJACENT LANDS ARE ACCURATELY AND CORRECTLY SHOWN.

M.T. BROS & SONSON
ON-TARIO LAND SURVEYOR

J.D. BARNES LIMITED
LAND INFORMATION SPECIALISTS
REGISTERED PROFESSIONAL LAND SURVEYORS
1000 SHEPPARD AVENUE EAST, SUITE 100, SCARBOROUGH, ONTARIO M1S 1T7
TEL: (416) 291-7222

THE KING'S HIGHWAY N. 12 (ROAD ALLOWANCE BETWEEN LOTS 10 AND 11)